



# Introduction

- The new Cruze marks its entry into the car segment in Kenya and will be available in 1.8L and 1.6L
- With Sporty and refined looks, the Cruze features a dramatic re-interpretation of the traditional sedan, e.g. Optra, featuring Chevrolet's new global design language which is becoming a signature on all new products carrying the gold bowtie.

# Powertrain

- The Cruze will be available with 1.6 and 1.8lt petrol engines.
- With variable valve timing (VVT) and EGR giving more power as well as better fuel economy and lower emissions.
- Chevrolet's first six-speed auto-adaptive automatic transmission, application in the car segment, complete the power-train menu.



## CHEVLORET CRUZE TECHNICAL SPECIFICATIONS

	L	LS	LS	LT
TECHNICAL SPECIFICATIONS	1.6	1.6	1.8	1.8
Engine Capacity	1598cc	1598cc	1796cc	1796cc
Number of Cylinders	4	4	4	4
Cylinder head	16V DOHC	16V DOHC	16V DOHC	16V DOHC
Bore/stroke (mm)	79/81.5	79/81.6	80.5/88.2	80.5/88.2
Power-Kw @ r/min	80 KW	80KW	103KW	103KW
Torque- Nm @ r/min	153Nm @4200 rpm	153Nm @4200 rpm	176Nm @ 3800 rpm	176Nm @ 3800 rpm
Compression ratio	10.8:1	10.8:2	10.5:1	10.5:2
Transmission	5spd manu	5spd manual	5spd manual	6 spd auto
Tyres	205/60R16	205/60R16	205/60R16	215/50R17
FUEL TANK CAPACITIES	60L	60L	60L	60L

## Interior Comfort & Safety Features

- Cruze is the result of a development process harnessing GM's global expertise
- It is the first of a new family of compact products that will deliver world class quality.

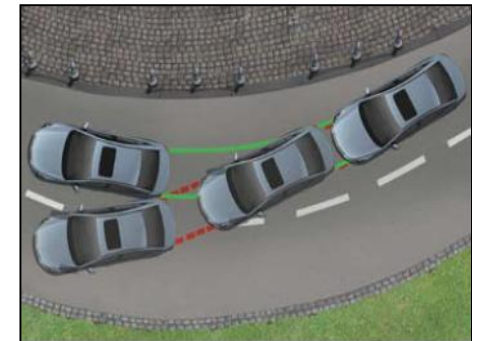
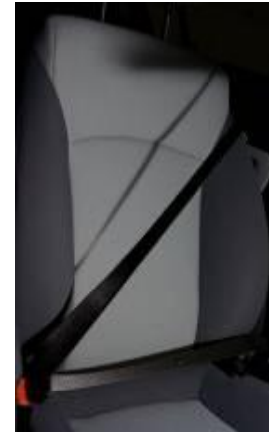
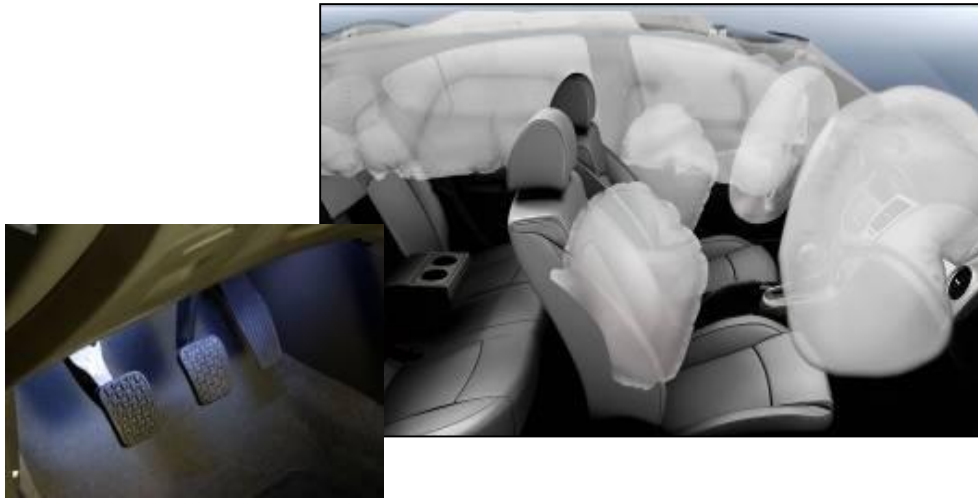


# Safety

- Front and rear crush zones engineered to collapse in a controlled manner to absorb crash energy.
- A collapsible pedal assembly reduces the chance of lower extremity injuries to the driver in a frontal collision.
- Electronic Stability Control;
- Traction control;
- Anti-Lock Brakes;
- Brake Assist;
- Electronic Brake-force Distribution;
- Six air bags including driver, front passenger, front side and curtain air bags;
- Seat belt reminders, retractor and lap pretensioners with seat belt load limiters.



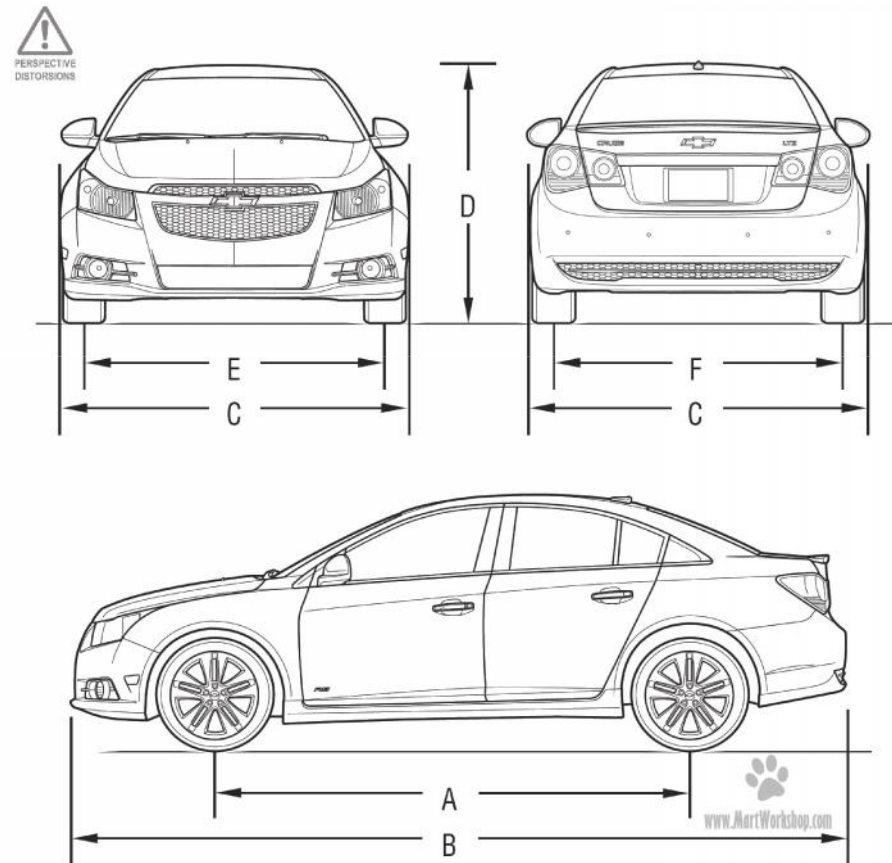
# Safety



## Dimensions

The new compact sedans derive much of their solid, confident road feel and driving comfort from its solid, stable foundation. It features:

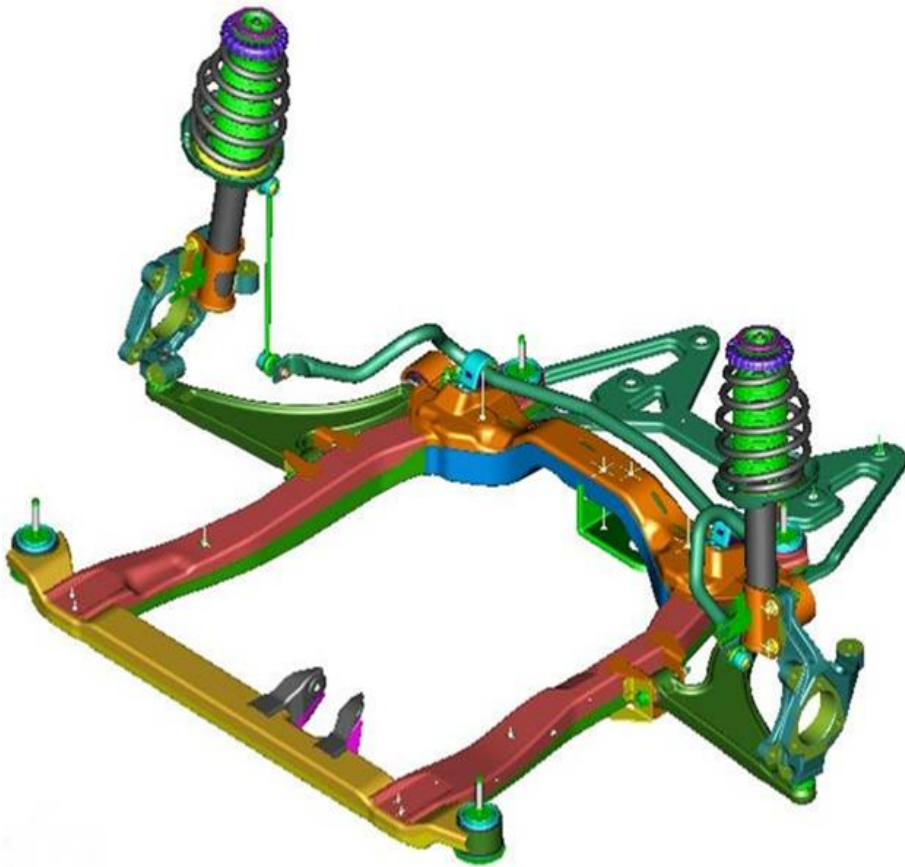
- A stable footprint.
  - Overall length - 4517mm **(B)**
  - Width - 1788mm **(C)**
  - Height - 1477mm **(D)**
  - A wheelbase - 2685mm **(A)**
  - front track - 1544-mm **(E)**
  - rear track - 1558-mm **(F)**



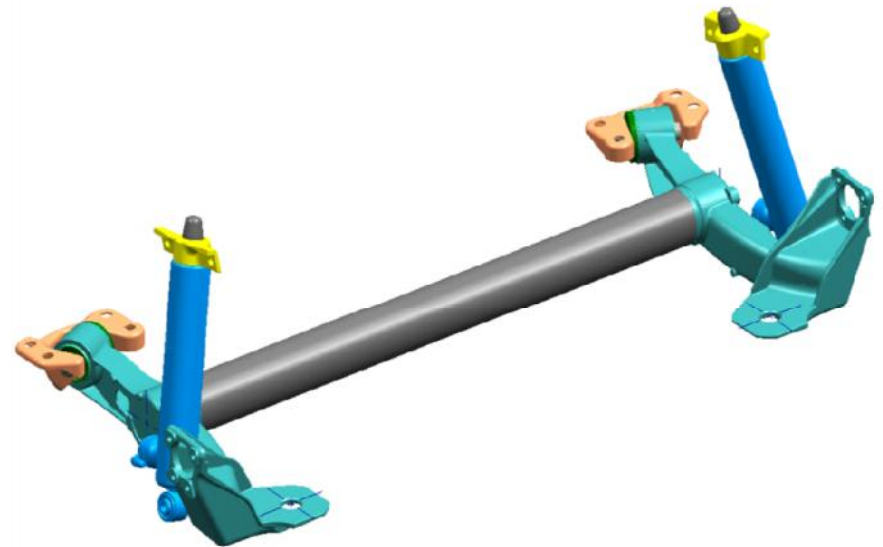


## Front Suspension and Rear suspension

- The McPherson strut-type front suspension.



- Compound crank axle.



# Exterior Design



- Radio:
- MP3 Compatibility
- Auxiliary Jack and USB
- floor console box
- 6 speakers
- Steering controls
- On-board computer



